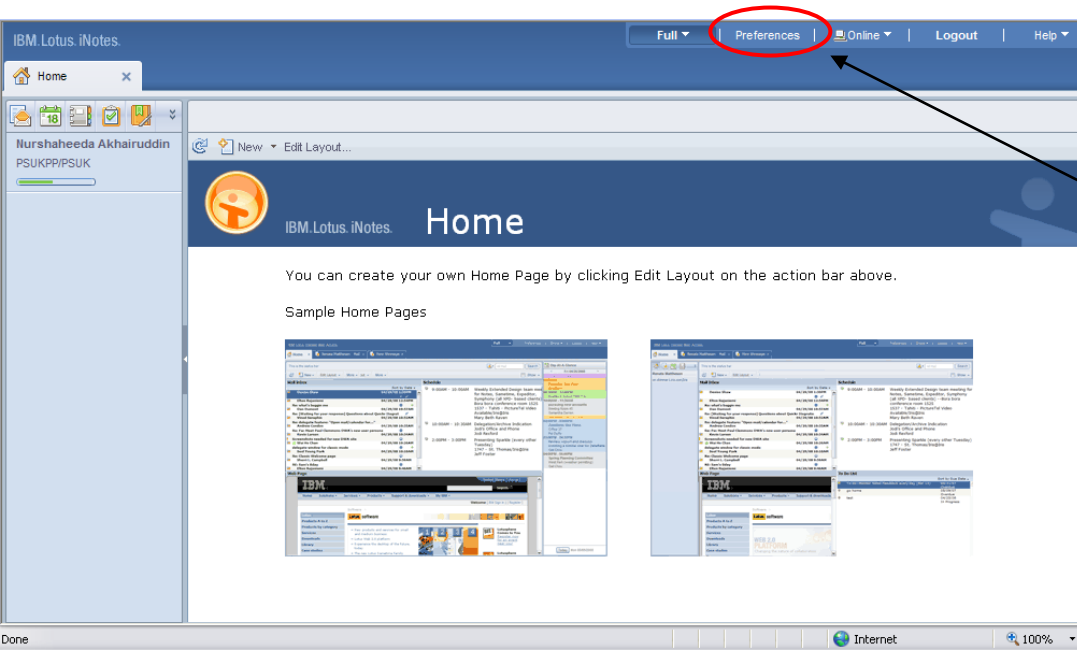
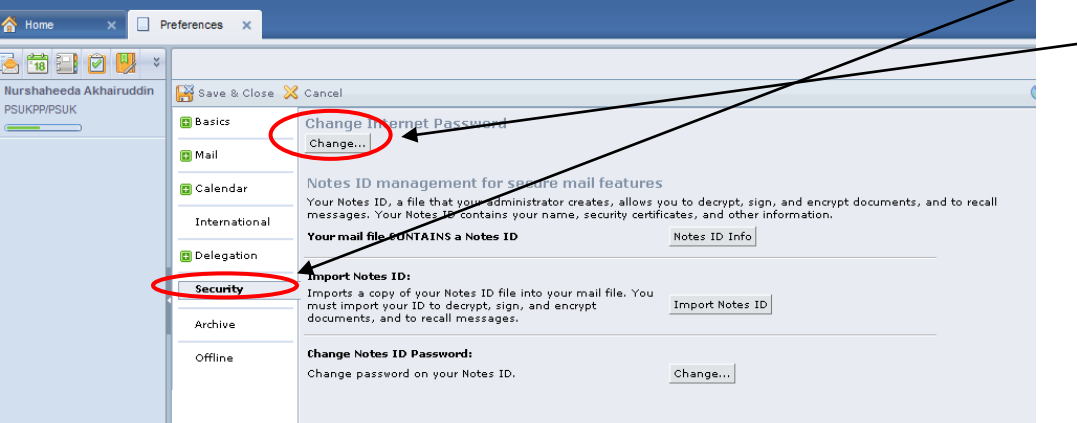
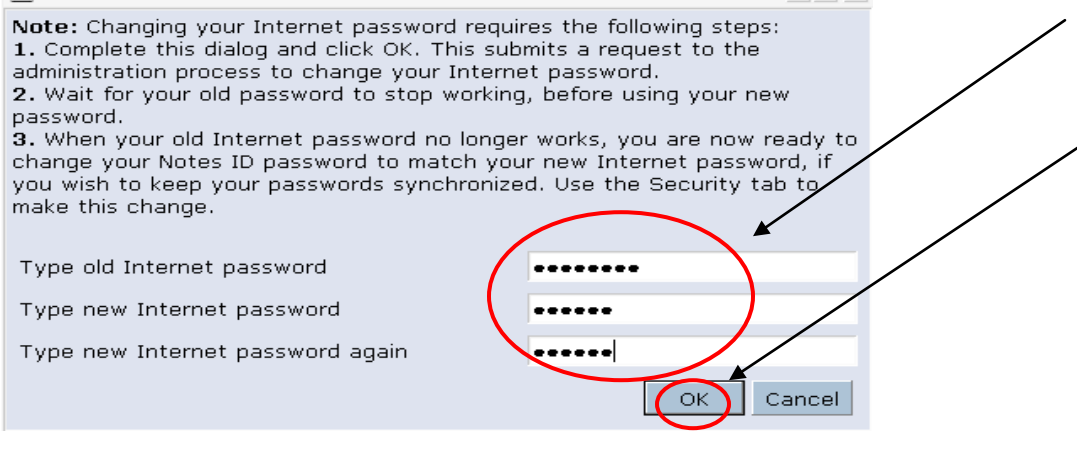


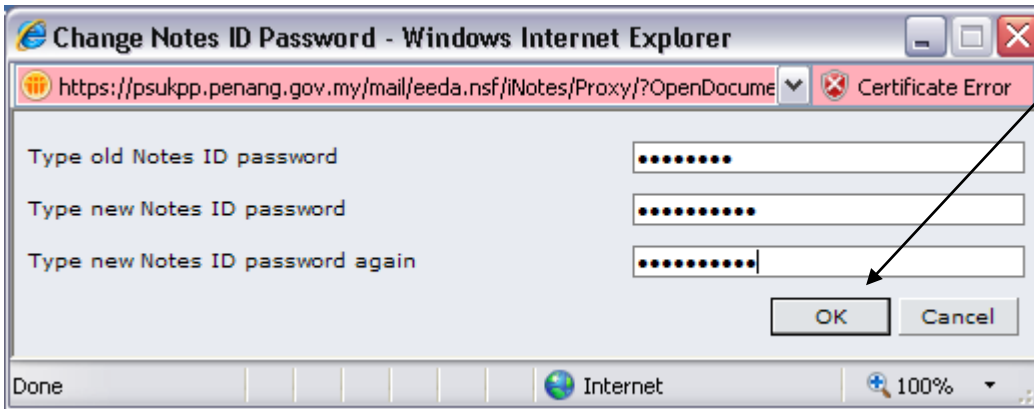
BAB 3 : MENUKAR KATALALUAN

MENUKAR KATALALUAN		
<p>1.</p>	 <p>The screenshot shows the IBM Lotus iNotes interface. At the top right, there is a navigation bar with buttons for 'Full', 'Preferences', 'Online', 'Logout', and 'Help'. The 'Preferences' button is circled in red. Below the navigation bar, there is a 'Home' section with a title and a description: 'You can create your own Home Page by clicking Edit Layout on the action bar above.' There are also 'Sample Home Pages' displayed as thumbnails.</p>	<p>Paparan Welcome Page akan dipaparkan</p> <p>Klik butang preferences untuk tukar kata laluan</p>
<p>2.</p>	 <p>The screenshot shows the 'Preferences' dialog box in IBM Lotus iNotes. The 'Security' tab is selected and circled in red. Within the 'Security' tab, the 'Change Internet Password' section is visible, and the 'Change...' button is circled in red. Below this, there are sections for 'Notes ID management for secure mail features', 'Import Notes ID', and 'Change Notes ID Password', each with a 'Change...' button.</p>	<p>Klik butang Security</p> <p>Klik butang Change</p>
	 <p>The screenshot shows a web browser window with the URL 'https://psukpp.penang.gov.my - Request Internet Password Change - Microsoft...'. The page contains a 'Note' with three steps for changing the password. Below the note are three input fields: 'Type old Internet password', 'Type new Internet password', and 'Type new Internet password again'. The 'OK' button is circled in red.</p>	<p>Taip new password anda disini</p> <p>Setelah selesai klik butang OK</p>

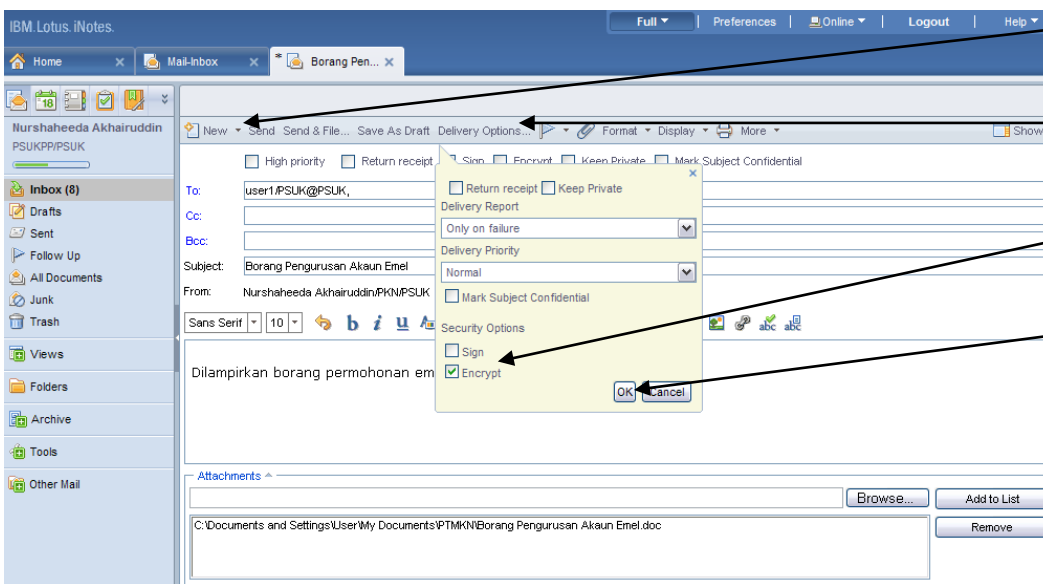
3.



User also can change their **Notes ID Password**. Click the **change** button.



Key-in the new password, click **OK**.



- 1.) Click **New Message** first.
- 2.) Click the **Delivery Options**
- 3.) Check the **Encrypt** box.
- 4.) Click **OK**

(**Note** : Your email will



be recognized as encrypted).

When click send, you will be prompt to enter your Notes ID password. Enter your **Notes ID password** and click **OK**.

(Note : Password is required for first time use).